

## Apartment in Atalaya

Reference: R2920529



Bedrooms: 2

Bathrooms: by request

M<sup>2</sup>: 120

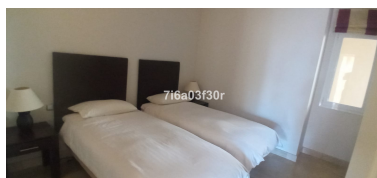
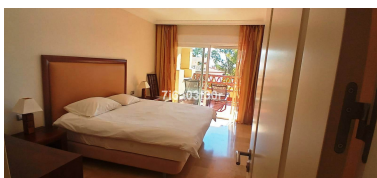
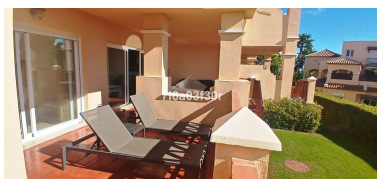
Price: 360,000 €

Status: Sale

Property Type: Apartment

Parking places: by request

Printing day : 26th August  
2025



Overview: Spacious 2 Bedroom elevated Ground Floor Apartment, South West facing with large sunny terrace and garden Marques de Atalaya Prestigious Community Gated Development Overlooking Atalaya Golf Course The apartment: •Large and bright living/dining room with double patio doors •Siemens fitted kitchen with all appliances and marble counters •Master bedroom with 4 built-in wardrobes and changing area •Generously sized second and third bedroom with built-in wardrobes •Two on-suite bathrooms with walk in showers and a bath •Guest toilet and under floor heating in bathrooms and toilet •Central air conditioning/heating system •Polished marble floors throughout •2 Underground parking spaces with lift to apartment •Lockable underground storage room •Fibre optic, intercom to gate The complex: •Well designed and built development with spacious apartments •Beautifully landscaped and maintained gardens •Gated community with 24 hour security •Two large outdoor pools plus two children's pools •Heated indoor pool with steam room, sauna, Jacuzzi •Small gym and tennis court •Fully completed development with established community •Many permanent residents so there are always people around •Overlooking the high quality Atalaya Golf Courses •On a quiet side road off the road to the renowned mountain The area: •The white hill village of Benahavis, famed for its restaurants is just a few minutes drive away •The friendly town of San Pedro de Alcantara is also nearby •Puerto Banus, with all its nightlife, is just 10 minutes drive •Also close by is Marbella and its beautiful old town and beaches •Ronda, Gibraltar, Tarifa, Fuengirola and Malaga are all within an hour's drive •The nearest sandy beach is less than 10 minutes drive •Nearby there are supermarkets and many small local shops, coffee bars and restaurants •There are over 50 golf courses within an hours drive •Selwo Safari Park is just 15 mins drive away Middle Floor Apartment, Atalaya, Costa del Sol. 2 Bedrooms, 2.5 Bathrooms, Built 120 m², Terrace 39 m². Setting : Close To Golf, Close To Shops, Close To Sea, Close To Town, Close To Schools, Urbanisation. Orientation : South West, West. Condition : Excellent. Pool : Communal, Indoor, Heated, Children`s Pool. Climate Control : Air Conditioning, Hot A/C, Cold A/C, U/F/H Bathrooms. Views : Garden. Features : Covered Terrace, Lift, Fitted Wardrobes, Private Terrace, Satellite TV, ADSL / WIFI, Gym, Sauna, Tennis Court, Storage Room, Ensuite Bathroom, Marble Flooring, Jacuzzi, Double Glazing. Furniture : Not Furnished, Optional. Kitchen : Fully Fitted. Garden : Communal. Security : Gated Complex, Entry Phone, 24 Hour Security. Parking : Underground. Utilities : Electricity, Drinkable Water, Telephone. Category : Golf, Holiday Homes, Investment, Luxury, Resale, Contemporary.

---

#### Features:

None, Pool, Air conditioning, Heating, Private garden, Lift, None, 24H Security, Parking, Holiday Home, Investment, Luxury, Resale