

## Terraced Townhouse in Aloha

Reference: R3382078



Bedrooms: 3

Bathrooms: 3

M<sup>2</sup>: 200

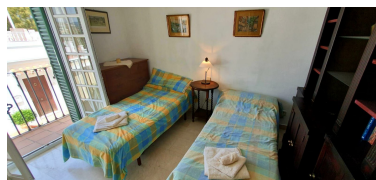
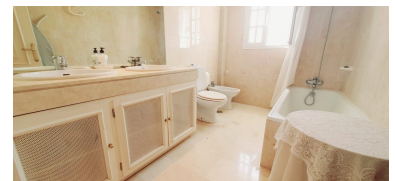
Price: 650,000 €

Status: Sale

Property Type: Terraced  
Townhouse

Parking places: by request

Printing day : 15th July 2025



Overview: Character Townhouse located in the heart of the desirable Aloha Pueblo. Facing Southwest with views of Mountains and Sea. Balconies off most rooms with views. Fitted Kitchen, Large Living Room with fireplace, 3 Bedrooms all en-suite. Private parking for residents. \*Private Garage can be bought separately ALOHA PUEBLO is located in the heart of the Marbella Golf Valley with 4 prestigious golf courses, just behind Marbella's famous Puerto Banus. Aloha Pueblo is in a prime location overlooking Aloha Golf, Las Brisas Golf, Los Naranjos Golf and La Quinta Golf, two of which have hosted many European Tour golf championships. Aloha Pueblo consists of 188 residential units. With its charm, you won't see one similar to the other, this is a unique piece of architectural art. They have many locations where you can find international lawyers, construction companies, real estate agents, hairdressers and more. To serve residents, workers and tourists, there are three bars/restaurants where you can find delicious breakfasts, lunches and dinners as well as quizzes, live music and sports screens, gym and various classes. The residents of Aloha Pueblo are very cosmopolitan, of all nationalities, and have a very good general atmosphere that welcomes tourists as well. Here you will find quality of life. Built between 1985 and 1989, Aloha Pueblo resembles an Andalusian village with squares and squares, many fountains and plants named after famous squares from different Andalusian cities. Aloha Pueblo has won numerous awards for pioneering architecture ahead of its time. .... Setting : Village, Close To Golf, Close To Shops, Close To Town, Close To Schools. Orientation : South, South West. Condition : Excellent. Pool : Communal. Climate Control : Air Conditioning, Fireplace. Views : Mountain. Features : Covered Terrace, Near Transport, Private Terrace, ADSL / WIFI. Furniture : Not Furnished. Kitchen : Fully Fitted. Garden : Communal. Parking : Garage. Utilities : Electricity, Drinkable Water, Telephone.

---

Features:

Pool, Air conditioning, Mountain views, None, Private garden, Parking