

Apartment in Atalaya

Reference: R3666980



Bedrooms: 4

Bathrooms: 3

M²: 182

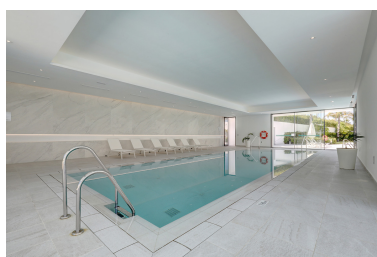
Price: 1,150,000 €

Status: Sale

Property Type: Apartment

Parking places: by request

Printing day : 12th June
2026



Overview:MIDDLE FLOOR DUPLEX. Cataleya is one of the most prestigious new developments set within the beautiful Atalaya golf course close to Benahavis town and local amenities. With 20,000m² of tropical gardens and an outdoor pool of over 450m² with a beach style entry, this luxurious 4 bedroom duplex apartment is a one of a kind within this development. Situated on the 1st floor with great views to the West the apartment comes with many great features. From the garage offering you 4 parking spaces and a very good size storeroom this property is a great family home. Entering the apartment you have the open plan living, dining and kitchen area all leading onto the huge terrace which overlook the pool areas and tropical gardens. Also on this level a guest toilet, large double bedroom and en-suite shower and toilet. Upstairs you have 3 more double bedrooms, all with plenty of wardrobe space and all leading onto the second terrace giving even better views to the mountains and golf course. This apartment comes fully furnished all with brand new top of the range furniture.

Features:

None, Pool, Air conditioning, Heating, Mountain views, Private garden, Lift, None, Alarm system, 24H Security, Holiday Home, Investment, Luxury