

Penthouse in Atalaya

Reference: R3710216



Bedrooms: 3

Bathrooms: 3

M<sup>2</sup>: 136

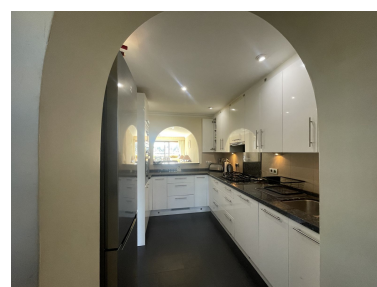
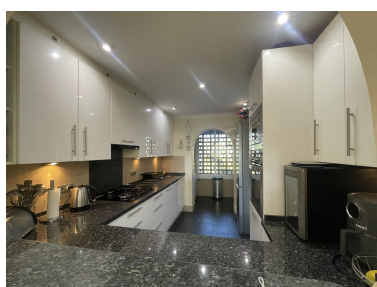
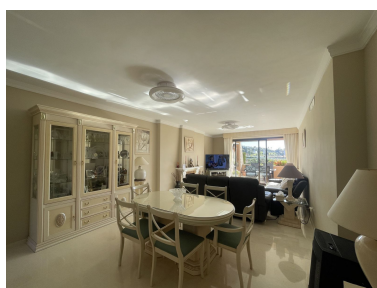
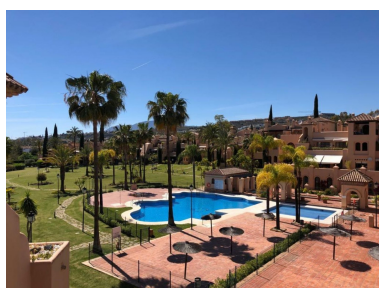
Price: 435,000 €

Status: Sale

Property Type: Penthouse

Parking places: by request

Printing day : 30th April  
2026



---

Overview: This stunning duplex penthouse located in the extremely popular La Cartuja in Atalaya within a few minutes to many Golf courses, Supermarkets and the Colegio School. This stunning apartment has been maintained to a high standard with modern finishes throughout. On entering the property there is immediately a feeling of light and space, at the rear of the property is a fantastic refurbished kitchen with utility room combined, leading through to the open plan living dining area with fireplace, which takes you out to the terrace overlooking the fantastic communal gardens with 2 large communal pools, also on this level is a double bedroom en suite which leads out to the terrace and to the rear is a further double bedroom with separate bathroom next door. On the upper level is the Master suite with en suite, with direct access to the main large terrace which can also be accessed separately by guests with BBQ and kitchen facilities, a fantastic space for entertaining or enjoying the summer nights, again with good views and very private. Penthouse, Atalaya, Costa del Sol. 3 Bedrooms, 3 Bathrooms, Built 238 m<sup>2</sup>, Terrace 60 m<sup>2</sup>. Setting : Close To Golf, Close To Port, Close To Shops, Close To Sea, Close To Town, Close To Schools, Urbanisation. Orientation : South West. Condition : Excellent. Pool : Communal, Children`s Pool. Climate Control : Pre Installed A/C, Fireplace. Views : Mountain, Garden, Pool. Features : Covered Terrace, Fitted Wardrobes, Near Transport, Private Terrace, Paddle Tennis, Tennis Court, Utility Room, Ensuite Bathroom, Marble Flooring, Double Glazing. Furniture : Optional. Kitchen : Fully Fitted. Garden : Communal. Security : Gated Complex, Entry Phone, 24 Hour Security. Parking : Open, Private. Category : Luxury, Resale.

---

Features:

None, Pool, Mountain views, Private garden, None, 24H Security, Parking, Luxury, Resale