

Commercial in Elviria

Reference: R3727642



Bedrooms: by request

Bathrooms: by request

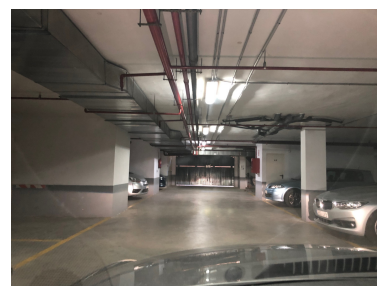
M²: 14

Price: 9,850 €

Status: Sale

Property Type: Commercial Parking places: by request

Printing day : 4th February
2025





Overview:Storage room, storage room in the basement of the Pino Golf, near N340, easy access, secure double entrance, 14 m2 built, 8 m2 inside.

Features:

None, None, Parking, Resale