

Penthouse in Benalmadena

Reference: R3761497



Bedrooms: 4

Bathrooms: 3

M<sup>2</sup>: 497

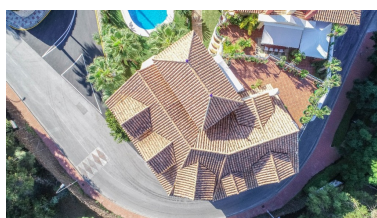
Price: 865,000 €

Status: Sale

Property Type: Penthouse

Parking places: by request

Printing day : 12th January 2025



Overview: Luxurious penthouse with panoramic views located in front of the Torrequebrada Golf course in one of the most exclusive complexes in the area. It is mainly distributed on one floor plus a second floor ideal for guests or offices. It is accessed by elevator with access code directly from the garage or ground floor. Leaving the elevator, we find a very elegant distributor from where you can go directly: 1) to the beautiful and spacious terrace with barbecue, dining table, pergola with seating area and panoramic views of the mountains, golf course, Fuengirola and the sea. 2) or go up to the upper floor where there is a spacious room ideal for offices, painting room, games room or bedrooms where there is also a full bathroom and a large sunny terrace with beautiful views. 3) or enter to the property with entrance hall, bright living room, large and fully equipped kitchen, 3 double bedrooms and 2 bathrooms. Master bedroom located behind the living room through a wonderful Thai door, this bedroom is in the corner with several windows, it is spacious, bright with a dressing room and en suite bathroom with Jacuzzi. The second bedroom has direct access to the main terrace where the barbecue is located. Property built with high quality materials, with central air conditioning, double glazed windows, marble floors and bathrooms, it is sold fully furnished brought from different Asian countries. Garage included in the price. Very well-maintained community with pool and gardens. Total build size 497,56m<sup>2</sup>. Living area 336,68m<sup>2</sup> plus 160,88m<sup>2</sup> of terraces. IBI 2.249€ per year. Community 376,98€ per month. Year of construction 2003.

---

Features:

None, Pool, Air conditioning, Heating, Sea views, Mountain views, Lift, None, Private garden, Parking