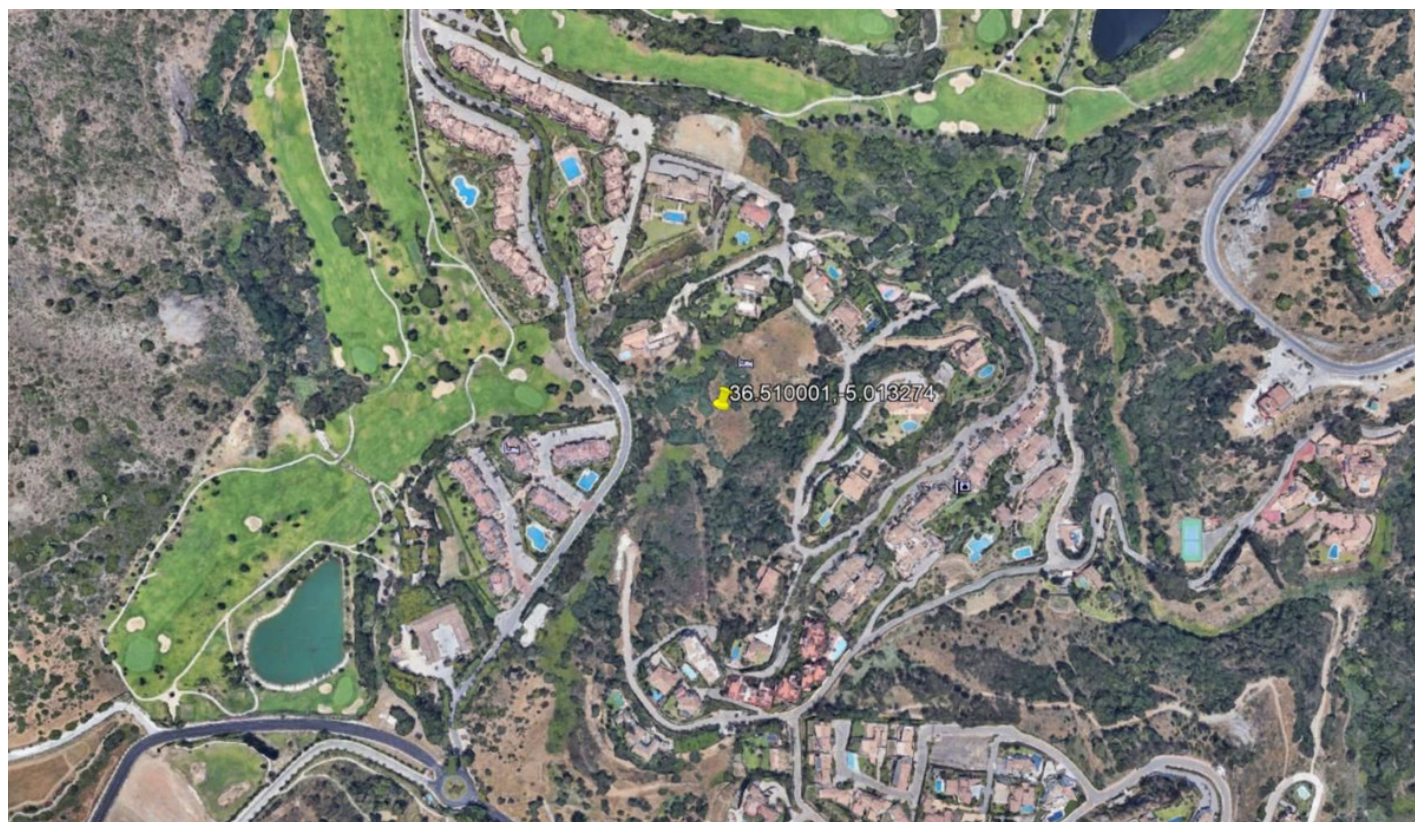


Land in Benahavís

Reference: R3805150



Bedrooms: by request

Bathrooms: by request

M²: 1,000

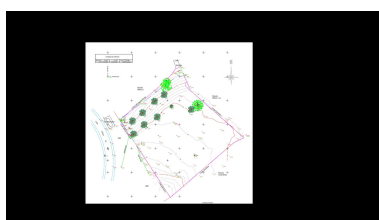
Price: 1,300,000 €

Status: Sale

Property Type: Land

Parking places: by request

Printing day : 22nd
September 2024



Overview: Plot in Puerto del Almendro, Benahavís - Marbella Flat plot of 5.186 sqm. - Edif. 20 pct. min. plot 3.000 sqm. - Very tranquil and idyllic location - open views and very private - Sea views from second floor. Approved project available - see renders.

Features: