

Penthouse in Fuengirola

Reference: R3875032



Bedrooms: 3

Bathrooms: 2

M<sup>2</sup>: 142

Price: 1,450,000 €

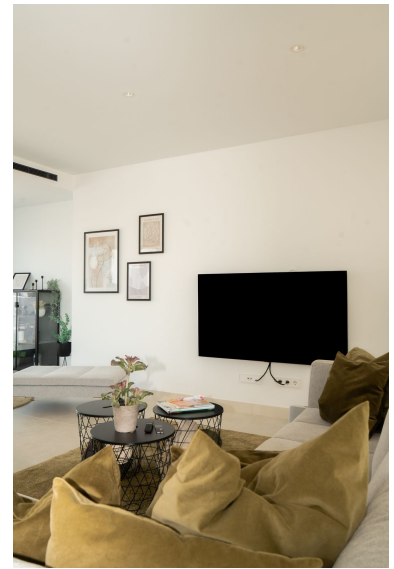
Status: Sale

Property Type: Penthouse

Parking places: by request

Printing day : 21st  
September 2024





---

Overview: Brand New Luxury 3B Penthouse Higuero West 217 Ready Now A high quality and sustainable residential community tucked into a gentle green slope that overlooks the Fuengirola coastline from a peaceful and secluded position. It is built around an exceptional quality of life where residents are encouraged to lead healthier lives with an outstanding range of wellness facilities and services. Higuero West covers an area of ■■ over 500.000m<sup>2</sup>, with over 100,000m<sup>2</sup> of sustainable green areas, complete with walking, jogging and cycling paths, which form part of an integrated circuit that prioritizes resident wellbeing. The development will include a modern coworking business center with concierge services designed around your convenience. Owners enjoy the use of unrivaled existing on-site amenities, from a mini-mall to championship sports facilities, an award winning spa and exceptional dining options. Future plans include play areas for children, a pet park, organic vegetable lots, a shuttle service to the beach club and electric bike and car stations. In short, it is designed for those who live life, work and play to the full. If you have been looking for your dream property, have a look. Living room 33.76m<sup>2</sup>, Kitchen 16.41m<sup>2</sup>, Laundry room 2.70m<sup>2</sup>, Bedroom (1) 15.30m<sup>2</sup>, Bathroom (1) 7.34m<sup>2</sup>, Dressing room 1 3.37m<sup>2</sup>, Bedroom (2) 11.57m<sup>2</sup>, Bath 24.35m<sup>2</sup>, Bedroom (3) 12.12m<sup>2</sup>, Lobby- 8.68m<sup>2</sup> Pas llo 4.71m<sup>2</sup>, Tota Uti) 120.31m<sup>2</sup>, Total Closed 142.17m<sup>2</sup>, Living room terrace 142.26m<sup>2</sup>, Kitchen Terrace 17.46m<sup>2</sup>, Total Terraces 159.72m<sup>2</sup> Penthouse, Fuengirola, Costa del Sol. 3 Bedrooms, 2 Bathrooms, Built 142 m<sup>2</sup>, Terrace 159 m<sup>2</sup>. Setting : Close To Port, Close To Shops, Close To Town, Close To Schools, Urbanisation. Orientation : South, South West. Condition : Excellent, New Construction. Pool : Communal. Climate Control : Air Conditioning, U/F Heating. Views : Sea, Mountain, Panoramic, Garden, Pool. Features : Covered Terrace, Lift, Fitted Wardrobes, Private Terrace, Solarium, Gym, Paddle Tennis, Tennis Court, Storage Room, Utility Room, Ensuite Bathroom, Disabled Access, Marble Flooring, Barbeque, Double Glazing, Fiber Optic. Furniture : Not Furnished. Kitchen : Fully Fitted. Security : Gated Complex, Entry Phone, 24 Hour Security. Parking : Underground, More Than One, Private. Utilities : Electricity, Drinkable Water. Category : Holiday Homes, Investment, Luxury, Resale, Contemporary.

---

#### Features:

New development, Pool, Air conditioning, Sea views, Mountain views, Private garden, Lift, None, 24H Security, Parking, Holiday Home, Investment, Luxury, Resale