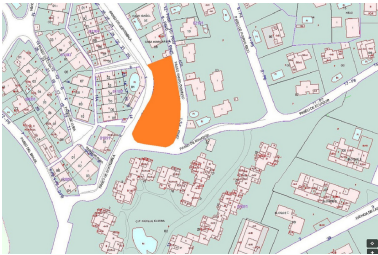
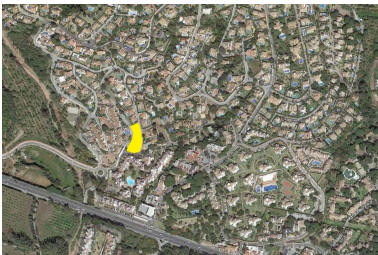


Land in Elviria

Reference: R3945733



Bedrooms: by request	Bathrooms: by request	M²: 1,745	Price: 450,000 €
Status: Sale	Property Type: Land	Parking places: by request	Printing day : 12th September 2025



Overview: This plot of urban land in the lower area of Las Cumbres de Elviria and very central with all adjacent supplies can be purchased with a project already completed for a paddle sports club with three courts and housing or without the project for the new owner in this place to build a single-family house with 0.20% of buildability currently allowed plus basement. In the area there are hardly any plots for sale, the exit to the N340 is very close and walking distance to many stores, large supermarkets and on the other side all the services that the center of the village of Elviria offers. The area is increasingly demanded by buyers and investors for keeping a low density of construction, many parks and green areas and long sandy beaches, the oldest properties in the neighborhood are gradually being renovated.

Features:

None, Investment