

Commercial in Benalmadena Costa

Reference: R3966169



Bedrooms: by request

Bathrooms: 2

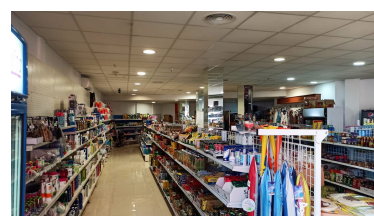
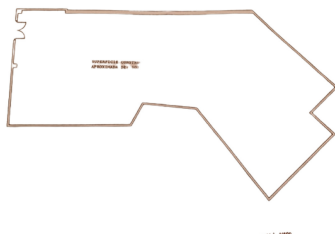
M²: 240

Price: 375,000 €

Status: Sale

Property Type: Commercial Parking places: by request

Printing day : 20th January 2025



Overview:Commercial premises for sale in Pueblo Quinta, Parque de la Paloma (Benalmádena Costa). 240 m2 street-level operating as a supermarket, it is distributed as a big open space, two toilets plus a storage room and office. Next to a pharmacy, in front of restaurants and meters away from the Paloma Park, Pueblo Quinta apartments, hotel Benalbeach, Sahara Sunset, Las Arenas... Perfect as supermarket, clinic, gymnasium, telemarketing office, driving school, co-working, real estate office...

Features:

None, None