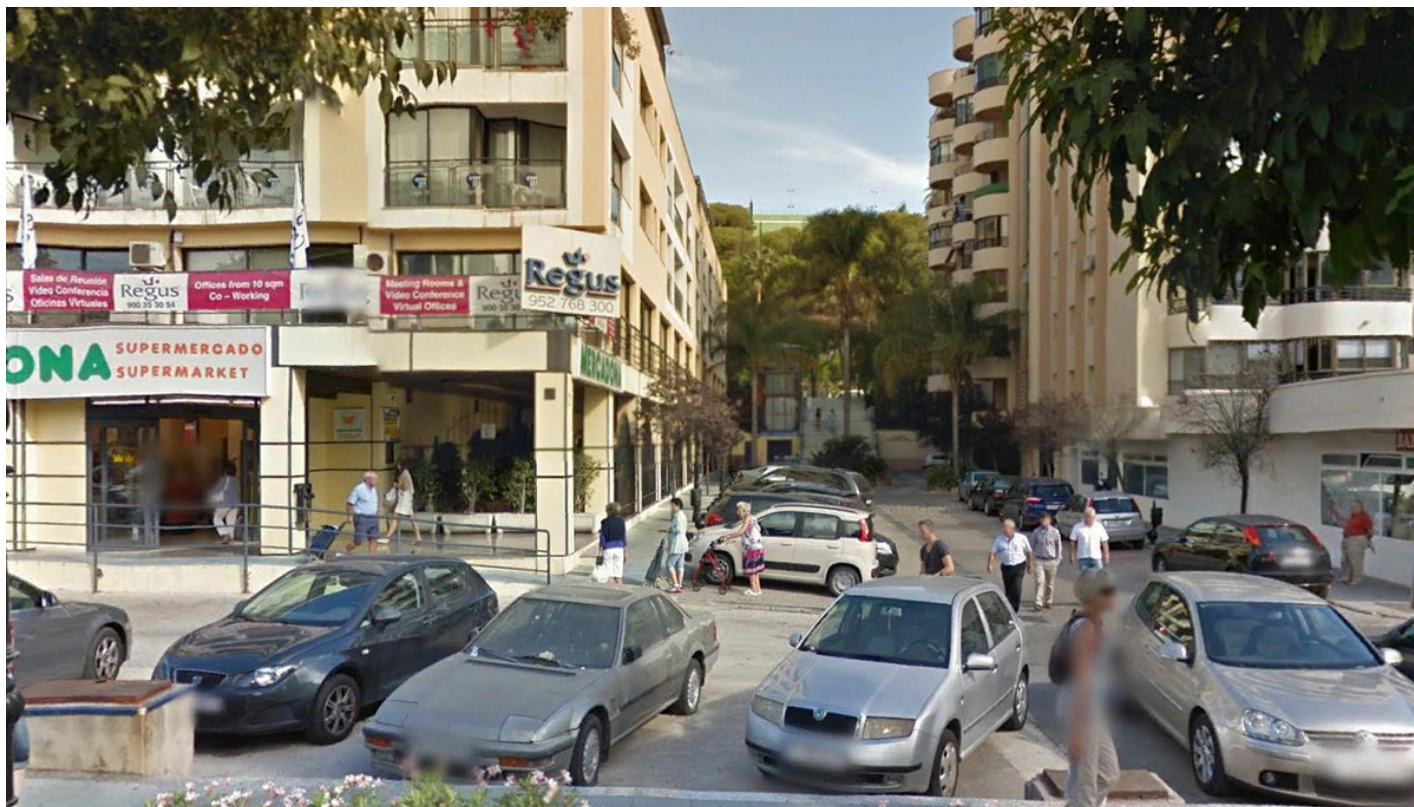


■■■■■■■■■■ ■ Marbella

■■■■■■■■■■: R2608382



██████████: ██ ██████████

██████████ : ████████████████████

M²: 245

■■■■: 545 000 €

☐ ☐ ☐ ☐ ☐ ☐ : ☐ ☐ ☐ ☐ ☐ ☐

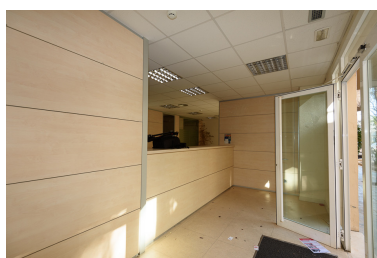
[illegible]

■■■■■ ■■■■■■■■ : 26th

■■■■■■■■■■

□ □ □ □ □ : □ □ □ □ □ □ □ □

■■■■■ 2025



■■■■■■■■■■:The local is located on the side of the West side of Edificio Horizon on Ricardo Soriano and close to Pirulli tower. It has 245 square meters. Ownership involves the use of communal parking for which two controls for access is delivered. The local is is equipped as an office and divided with mobile panels made of glass and wood. The is a reception area and waiting room, several offices and storeroom. It has a bathroom for the public and a private bathroom and a small kitchen.

■■■■■■■■■■: