

■ ■ ■ ■ ■ ■ Benahavís

■■■■■■■■■■: R3269704



■■■■■: 4

■■■■■: 4

M<sup>2</sup>: 488

■■■■: 1 900 000 €

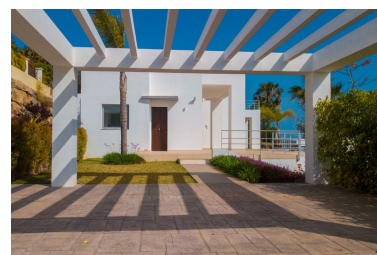
□□□□□□ : □□□□□□□□

[illegible]

**□ □ □ □ □ : □ □ □ □ □ □ □ □**

■■■■■ ■■■■■■■■ : 8th

■■■■■■■ 2025



■■■■■■■■■:New Development: Prices from €&nbsp;1,900,000 to €&nbsp;1,900,000. [Beds: 4 - 4] [Baths: 4 - 4]  
[Built size: 488.00 m2 - 488.00 m2] Contemporary four bedroom, south facing villa in this development, Benahavis,  
only a short drive to the beach, Puerto Banus and all leisure amenities. The villa is in an elevated position with  
wonderful sea and mountain views. There is a large bright living area with a fireplace and access to the partially  
covered terraces, garden and infinity swimming pool, a fully fitted kitchen with island; the master suite and three  
guest suites. Other features include hot and cold air conditioning and marble floors.

**□ □ □ □ □ □ □ □ □ □ :**

None, ██████████, ██, ██████████, ████████ ████████, ████████ ████████, ██████████ ████████, ██, ██ ██████████