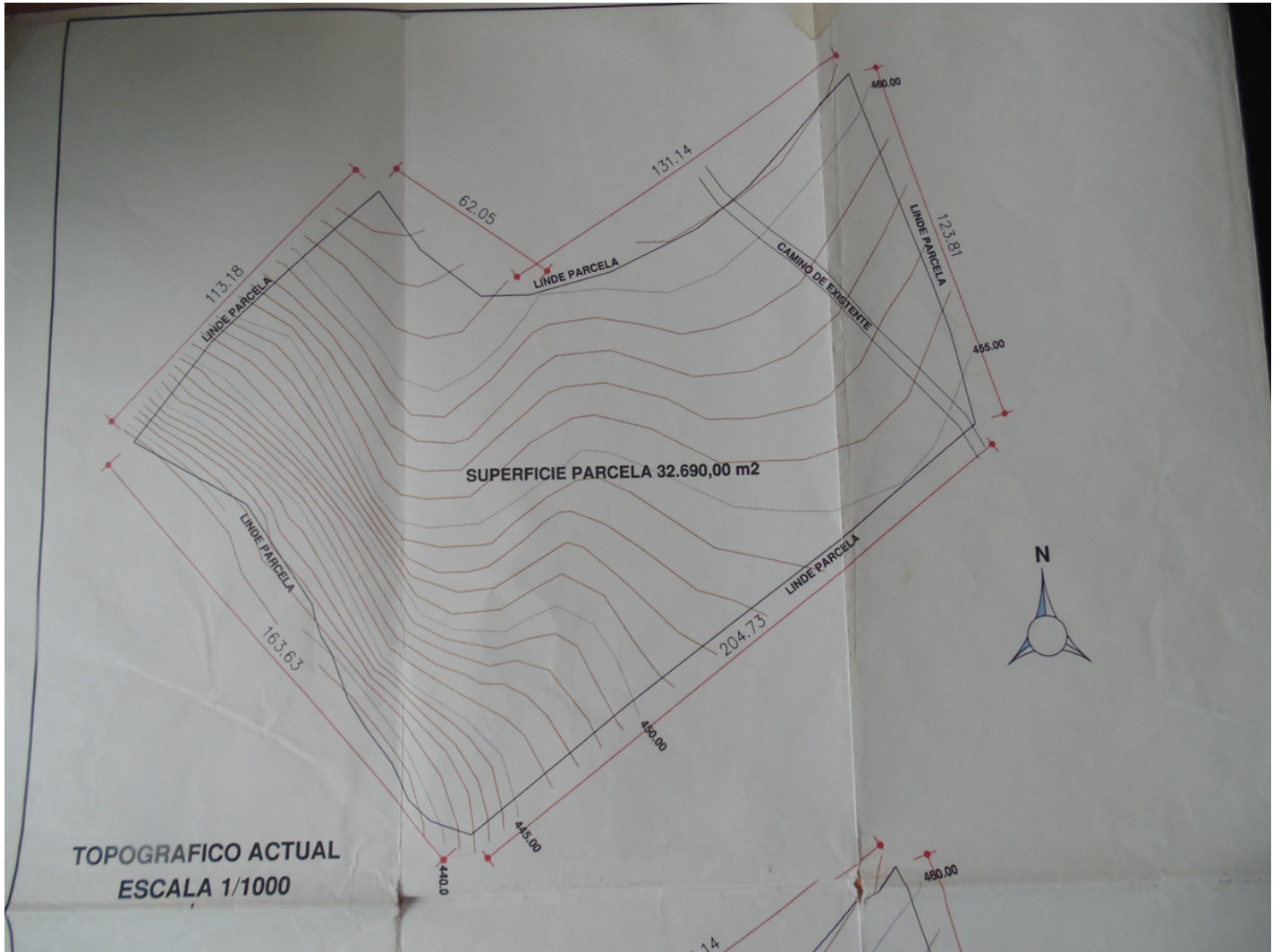


Casarabonela

R3308233



█: █ M²: 21 184 █: 99 000 €

█: █ █: █ █: 4th

█: █ █: █ █: 2024





■■■■■■■■■■: A large plot with a project for rural tourism just two kilometres south of the beautiful mountain village of Casarabonela, on the edge of the Sierra de las Nieves nature reserve. Located between two up and running rural tourist sites, the project here was for a house, four chalets, bar/restaurant and swimming pool. The plot has a water well. An excellent business opportunity, and just a 35 minute drive from Malaga Airport!

■■■■■■■■■■:

■■■ ■■ ■■■■, ■■■■■■■■■■, ■■■■■■■■■■