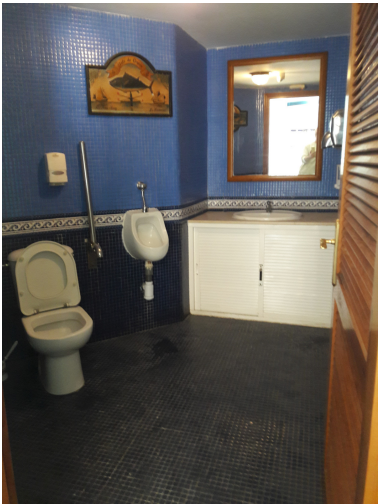


■■■■■■■■■■■■■■■■■■■■ ■ Benalmadena Costa

■■■■■■■■■■■■■■■■■■■■: R3346045





██████████:Commercial premise in first class tourist area, Puerto Deportivo de Benalmádena (PUERTO MARINA), next to the Yacht Club and the Diving and Sailing Schools. Currently enabled for Café-Restaurant has the following municipal licenses of activity: Cafeteria - Bar- Ice Cream Shop -Restaurant. It has 2 floors of 115 sq.mts, a terrace with 100 sq.mts. and 16 metres of facade in three ornamental arches. Excellent location, facing South, facing the sea with views to the inner islands from Puerto Marina by the East and to the open sea by the Southwest. Unbeatable situation in the possible expansion of the Marina.

██████████:

None, ██████████