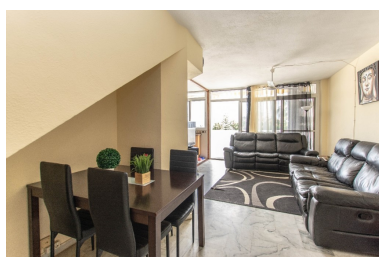


■■■■■■■■■■: R3394225



■■■■■ 2025



■■■■■■■■■■:Beautiful duplex apartment in Benalmadena Costa with beautiful sea and mountains views only 400 meters from the beach and close to all amenities. It is distributed in 2 floors as follows: Ground floor: Front porch, entrance hall, open plan kitchen and living area with small dining area and direct access to a private sunny terrace offering sun all day round, 2 double bedrooms full of light, staircase. Upstairs: Master bedroom with fitted wardrobes and large on suite bathroom . Basement: Private parking non-covered in front of the house. Property in good condition close to everything. Plenty of car parking space for visitors, double access to the house, good maintenance of the community, excellent views of the sea, mountains and urbanization. Total built size: 130m2. Living area: 125m2. Terrace: 5m2. IBI: 350€ per year Community fees; 150€ per month Rubbish: 100€ per year Built year: 1987. Distances: Amenities: 300mts. Golf course: 900mts. Train station Torreblanca: 1.2km Beach: 400mts. Malaga Airport: 15km.

---

■■■■■■■■■■:

■■■ ■■ ■■■■, ■■■ ■■ ■■■■, ■■■■■■■■ ■■■, None