

Cártama

■■■■■■■■■■: R3417178



■■■■■: 10

■■■■■: 5

M²: 1 150

■■■■: 2 500 000 €

██████████ : ████████████████████

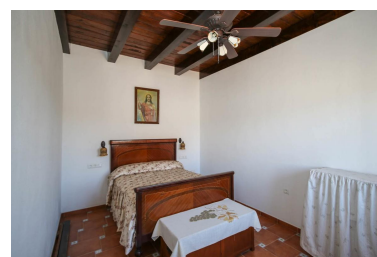
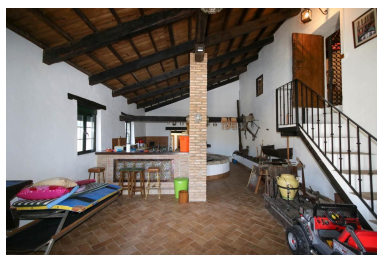
□ □ □ □ □ □ □ : □ □ □ □ □ □ □ □ :

□□□□□□ : □□ □□□□□□

■■■■ ■■■■■ : 26th

1111111111111111

■■■■■ 2025



■■■■■■■■■■:BUSINESS Opportunity . Character property . Loads of ORIGINAL features . Wine Cellar . MAKE YOUR OWN Olive Oil . Separate Accommodation . Outbuildings . Close to Malaga . Big open views . MAKE YOUR OWN WINE Come and view this no less that spectacular property in the hills of Estación de Cartama. An incredible estate with a vineyard, olive grove, wine cellar, separate accommodation and an impressive main house that oozes character. The houses consist of a large main property with feature underground wine cellar and bar area and various outbuildings that could be used for rentals. The property has a total of three kitchens (two interior and one exterior), 10 bedrooms and 5 bathrooms, pool with integrated jacuzzi and two large water deposits of the land. The panoramic views from the pool area will leave you speechless and the potential for business here is unlimited. Cártama is situated at the heart of the Guadalhorce valley, at the front of two small sierras and surrounded by thousands of citrus trees. It is one of the most extensive towns in the province and being close (17 km.) to the city of Málaga, the airport and the coast, it is a popular location! The village is divided into different communities: Cártama Pueblo, the old town, and Estación de Cártama, which is home to the railway station. The A-357 crosses in the middle. Both places have a vibrant centre, with lots of shops, bars and restaurants! Estación de Cártama not only links the village to the lively city centre of Málaga within 15 minutes, it is also a more and more upcoming leisure area. Cártama is only 15 minutes (16 km) from the city of Málaga and the airport. The beaches of the Costa del Sol (Torremolinos) are a 20 minute (20 km) drive away.

■■■■■■■■■■: