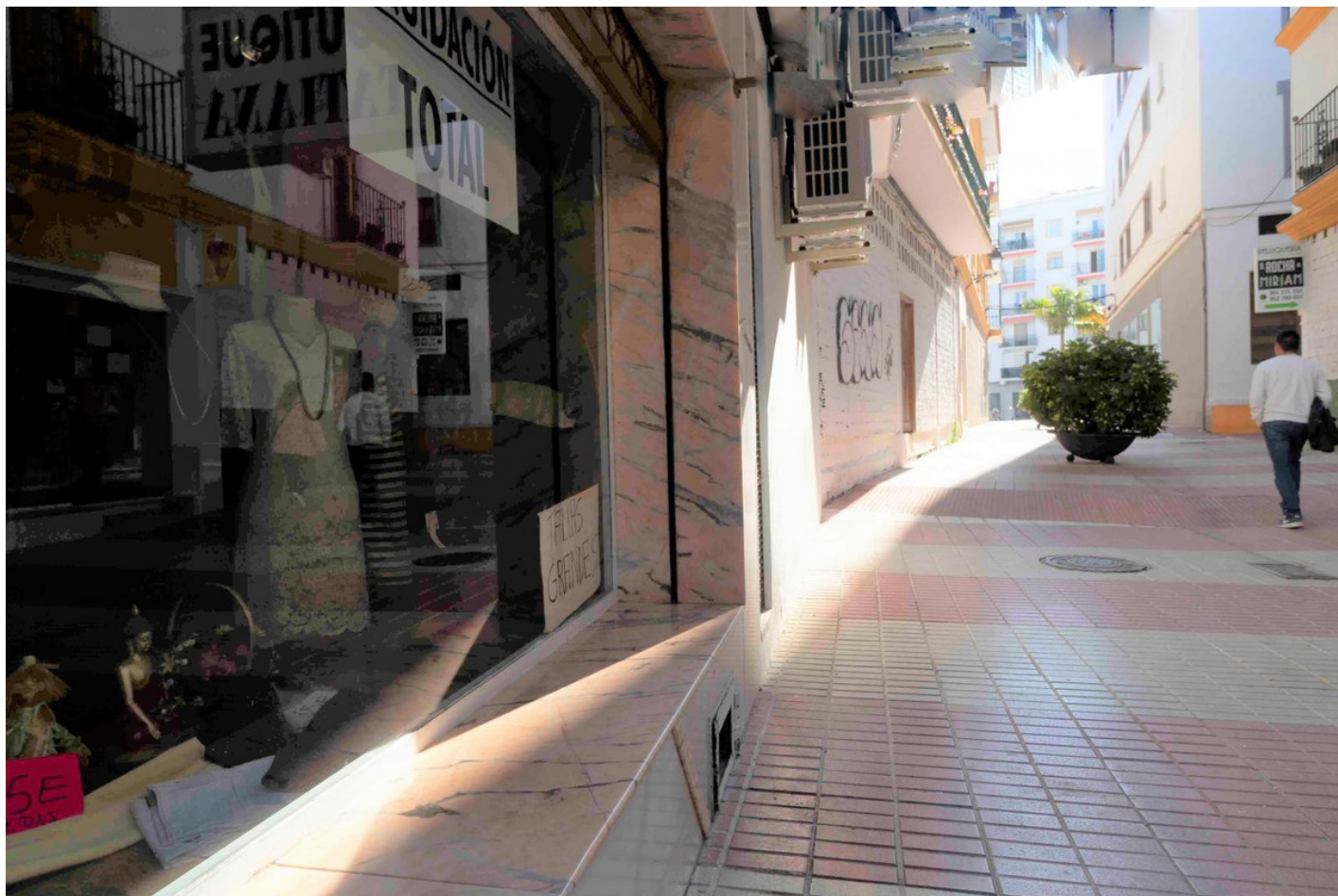


San Pedro de Alcántara

R3435583



1

1

M²: 55

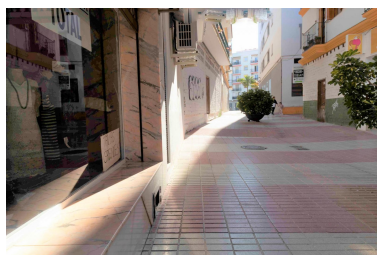
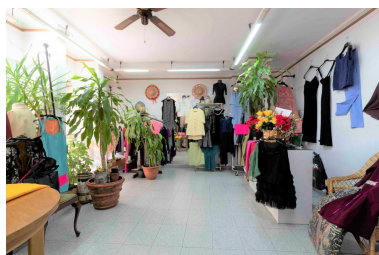
120 000 €

2025

27th

2025

2025



■■■■■■■■■■:Great commercial premises in one of the picturesque pedestrian streets of San Pedro, It is very conveniently located where the traffic of people is super common, Osea is a perpendicular to the famous Calle Ancha la del Marques del Duero, in front of NH San Pedro. In the same street there is a large architecture studio as well as a clinical laboratory. This place has been a shop for women's clothing throughout its life. It has a bathroom and storage area as well as a fitting room. It is an ideal place for all types of business, from a private medical consultation at street level or professional office, hairdresser or restaurant where you can expose the tables outside since it also has access to being located on the pedestrian street. It makes it great to have a terrace outside. In short, it has a lot of potential to open the business of your dreams

■■■■■■■■■■■■■■■:

None, ■■■■ ■■ ■■■■, ■■■■■■■■ ■■■■■■■■, ■■■■■■■■■■■■, ■■■■■■■■■■■■