

Manilva

R3446428



3

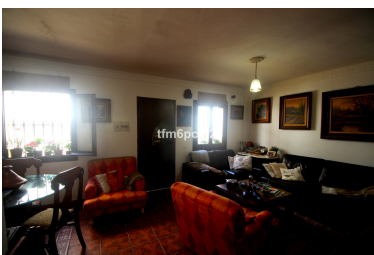
2

M²: 102

108 000 €

: 3rd

2025



■■■■■■■■■■:MANILVA PUEBLO TYPICAL TOWNHOUSE IN THE HEART OF THE VILLAGE * Rustic townhouse. Quite street. * Two floors and solarium with room and laundry area. * Recently refurbished. * Beautiful bathroom in the ground level. * Easy parking nearby. * Walking distance to everywhere in the village of Manilva. * Just a few steps from the health center and the sport installations. * Near the school and the church of Santa Ana. * If you love to live in a charming and typical Spanish village, this is your choice. Townhouse, Manilva, Costa del Sol. 3 Bedrooms, 2 Bathrooms, Built 102 m², Terrace 25 m². Setting : Village, Mountain Pueblo, Close To Schools. Orientation : South. Condition : Recently Refurbished. Views : Panoramic, Urban. Features : Fitted Wardrobes, Near Transport, Solarium, Paddle Tennis, Near Church, Fiber Optic. Kitchen : Fully Fitted. Parking : Street. Utilities : Electricity, Drinkable Water. Category : Resale.

■■■■■■■■■■:

■■■■■■■■■■ ■■■■■■, ■■■■■■■■■■