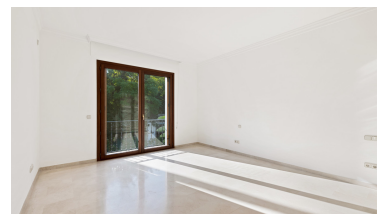


■■■■■■■■■■: R3577528



2025



■■■■■■■■■■:This fantastic and comfortable villa is built on a plot of 3.000m2 and offers 1.000m2 built with 200m2 terraces, 6 bedrooms, 6 bathrooms, 3 en-suite and a guest cloakroom. It enjoys an impressive double height entrance hall with sweeping staircase to the upper floor and the ground floor leads into large living rooms with completely different atmospheres. A stunning and spacious living room enjoying a central working fireplace and direct access to the terraces and gardens. A large formal dining room that connects to a private office or relaxation room before entering the kitchen. A beautiful modern fully fitted kitchen with top quality appliances, a breakfast area and laundry area. All bedrooms are spacious with top quality luxury bathrooms. A large lower level with garages, cinema and presentation room ideal for large parties or events, staff quarters and direct access to the gardens and pool area. Various terraces both covered and uncovered surround the property. The plot is all on one level and boasts well kept gardens with large swimming pool and Gazebo with beautiful barbeque area and pond. The property is secure with Security cameras around the perimeter and inside the property itself. Located in Atalaya Rio Verde an elegant residential area only a few minutes' walk into Puerto Banus and extremely well located. A luxury family villa in an exclusive tranquil location with amenities and facilities nearby.

---

■■■■■■■■■■: