

Elviria

R3704816



3

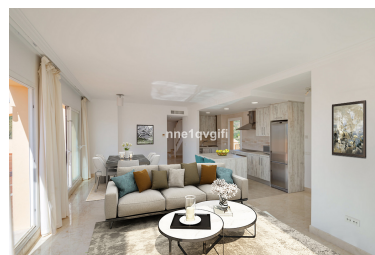
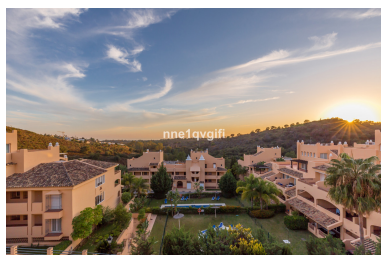
2

M<sup>2</sup>: 135

465 000 €

16th

2025



■■■■■■■■■■: Santa Maria Village is built in a typical Mediterranean village style with large terraces; cool, comfortable interiors, several swimming pools set in its extensive lush garden areas and stunning views to the mountains and the Mediterranean Sea. The properties have been designed to the best possible advantage for comfort, sunshine and the penthouses offering outstanding terraces. A fully gated development with 24 hour security and 8 swimming pools. Fantastic south facing penthouse with spacious sunny terraces in Elviria. This duplex penthouse has the best location within the complex offering lots of privacy and surrounded by greenery looking towards the mountains and the sea. Feels like a villa on the top! This property offers on the entrance level two bedrooms with one bathroom and a guest toilet, a lounge with dining area, open kitchen and a very large, south facing uncovered terrace with views towards the sea and the mountains. On the upper floor you have a very spacious master bedroom with own private terrace and ensuite bathroom with double sinks, bath and toilet and a walk in closet. This property has been virtually staged. It includes a garagespace and storeroom. The complex is surrounded by greenery but yet close to facilities. Large communal gardens with several swimming pools and 24 hour security at the main entrance gate. Elviria has got lovely sandy beaches, a choice of nice shops, bars and restaurants, the famous Nikki Beach and the 5 star hotel Don Carlos.

---

■■■■■■■■■■:

None, ■■■■■■■■■■, ■■■■ ■■ ■■■■■, ■■■■ ■■ ■■■■■, ■■■■■, ■■■■■■■■■■ ■■■■, ■■■■■■■■■■■■■■■■■■■  
■■■■■■■■■, ■■■■■■■■■■■■■■■■■■■ ■■■■■■, ■■■■■■■■■■■■■■■■■■■