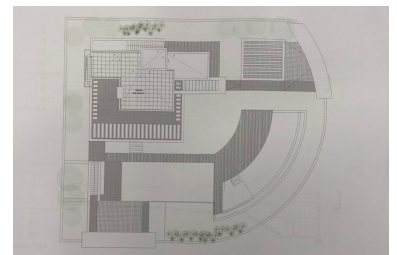
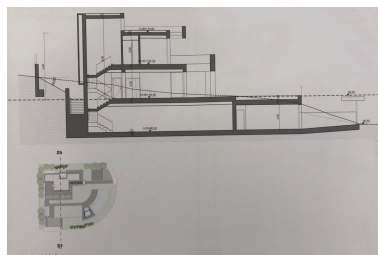
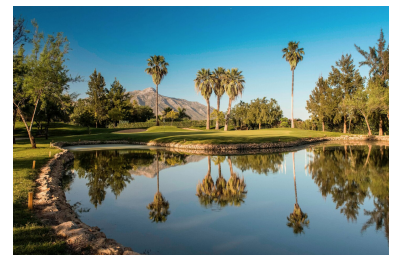


La Quinta

R3705605



| | | | |
|------------------------|--|------------------------|--------------------------|
| ██████████: ██████████ | ██████████: ██████████ | M ² : 1 218 | ██████: 600 000 € |
| ██████████: ██████████ | ██████████████████████████████: ██████████ | ██████████: ██████████ | ██████ ██████████ : 16th |
| | ██████████ | | ██████████ 2025 |



■■■■■■■■■■:Great value elevated and completely flat corner plot situated within the sought after area of La Quinta in Benahavis. This large plot offers clear sea views and is a very short walk from general amenities including a deli, 5* Hotel and a very popular 18 hole golf course. The plot has a proposed project with a modern design villa, with four large bedrooms, basement with underground car parking and several large sunny terraces giving spectacular views.

■■■■■■■■■■:

■■■ ■■ ■■■■, ■■■ ■■ ■■■■, ■■■■■■■■■■