

■■■■■■■■■■: R3837712



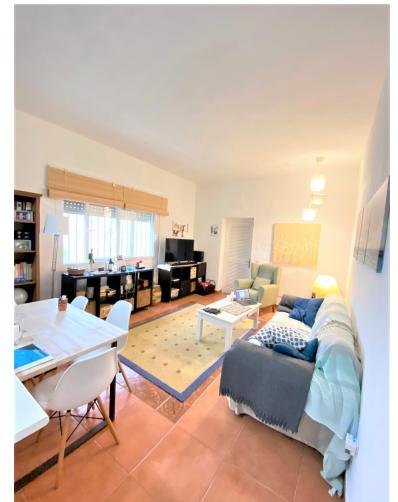
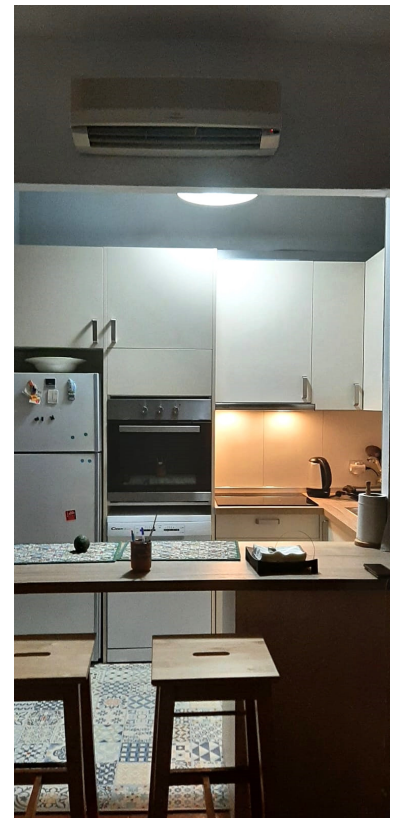
☐ ☐ ☐ ☐ ☐ ☐ : ☐ ☐ ☐ ☐ ☐ ☐

**□ □ □ □ □ □ □ □ □ □ □ □ □ :
□ □ □ □ □ □ □ □ □ □ :**

□□□□□: □□ □□□□□□□□

■■■■ ■■■■■ : 10th

■■■■■■■■ 2025



■■■■■■■■■:Excellent Investment. This semi-detached apartment is located in Pueblo Andaluz, in Marbesa located just 10 minutes walk from the beach and 10 minutes by car from Marbella Center. Surrounded by restaurants, large-scale supermarkets and services, this property is the ideal family home or rental investment. The house has 1 large bedroom and 1 bathroom. A living room and a fully open and equipped kitchen. Marbella is located on the shores of the Mediterranean, between Malaga and the Strait of Gibraltar, and at the foot of the Sierra Blanca. Its municipal term occupies an area of 117 km², crossed by the highway and the toll motorway called the Mediterranean, the main accesses to the municipality.

XXXXXXXXXX:

None, ██████████, ████████████████████, ██████████, ██████████ ████, ██████████████████ ██████,
████ ██████████, ██████████████████, ██████████████████