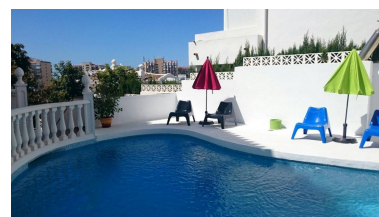
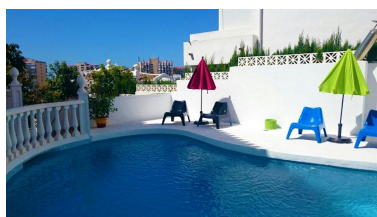
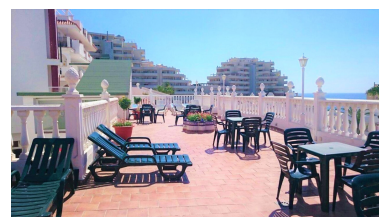
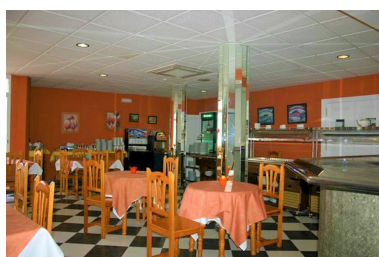


■■■■■■■■■■: R3838855



■■■■■ 2025



■■■■■■■■■■:Two-star hotel, excellent location, social building with the option of a residence for the elderly, medical clinic, hostel, etc. It has 5 floors and 53 rooms. It has a swimming pool, solarium with sea views, most of the rooms with views, cafeteria, restaurant, kitchen, own laundry, common rooms, two lifts, two offices, reception and hall. In a quiet area, five minutes walking distance to the beach, next to the Paloma park and 10 minutes walking distance to the Benalmádena marina. Very well maintained.

---

■■■■■■■■■■■:

None, None, ■■■■■■■■, ■■■■■■■■■■■■■■■■■■■■