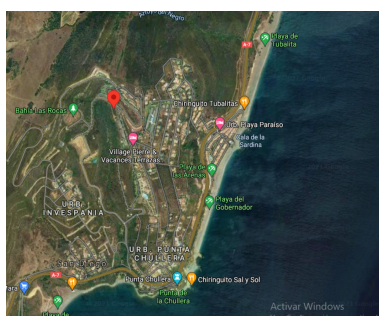
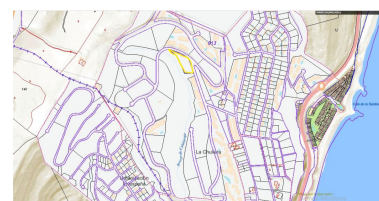
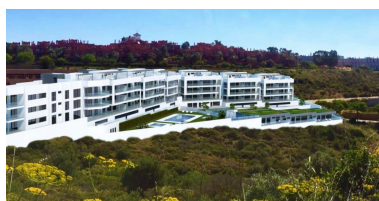


Manilva

R3842839



██████████: ██████████	██████████: ██████████	M <sup>2</sup> : 5 916	██████: 2 960 000 €
██████████: ██████████	██████████████████████████████: ██████████	██████████: ██████████	██████ ██████████ : 20th
	██████████		██████████ 2024



██████████:Manilva , Consolidated and finalist land Land: 6.796m2, Building ceiling: 5.916m2 Possibility to build 45 houses from which you can enjoy breathtaking panoramic views of the Mediterranean Sea and the Strait of Gibraltar. 10 minutes from the BEST GOLF COURSE in VALDERRAMA and 15 minutes from all the services of Sotogrande. Magnificent connections to GIBRALTAR AIRPORTS 31 km, MÁLAGA 97 km and JEREZ 135 km.

██████████: