

■ ■ ■ ■ ■ ■ Benalmadena

■■■■■■■■■■: R3850900



■■■■■: 4

■■■■■: 4

M<sup>2</sup>: 191

■■■■: 1 300 000 €

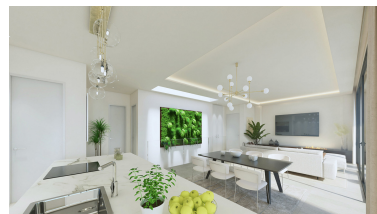
☐ ☐ ☐ ☐ ☐ ☐ : ☐ ☐ ☐ ☐ ☐ ☐

**■■■■ ■■■■■■■■■■■■■■■■■■■■:**

**■■■■■■**

**□ □ □ □ □ : □ □ □ □ □ □ □ □**

■■■■ ■■■■■■ : 29th  
■■■■■ 2025



■■■■■■■■■■:New Development: Prices from €&nbsp;1,300,000 to €&nbsp;1,300,000. [Beds: 4 - 4] [Baths: 4 - 4]  
[Built size: 191.00 m2 - 191.00 m2] These luxury, two-storey villas are in Torremuelle, one of the most beautiful  
locations on the Costa del Sol. Each villa has incredible uninterrupted views of the coast, the Mediterranean Sea,  
and the mountains. This is an exclusive development of just twenty luxury villas. The elegant, contemporary design  
is perfect for today's modern lifestyle. The villas present a sophisticated image, and the chic architectural lines  
create a bold and impressive exterior. Yet it's a refreshing style designed to enhance the space within each villa.  
There are expansive walls of floor to ceiling glass doors you can fully open to keep the villa cool and airy during the  
heat of a summer's day. They make the villa bright and welcoming by allowing maximum daylight to enter. The  
staircase is discreetly positioned to avoid it dominating the room and features a stylish, double height window panel  
or skylight to ensure it's brightly illuminated by the sun. There is also elegant, porcelain flooring flowing seamlessly  
throughout the rooms. The large, open-plan living room is perfect for a busy family life. This spacious room can  
easily accommodate a large dining table and more than one comfortable sofa, whilst maintaining a cosy  
atmosphere at the same time. A stylish fire pit at one end of the room adds warmth to a chilly evening. The  
open-plan design includes an elegant and practical kitchen perfect for everyday life, or when you want to entertain  
your friends. The kitchen includes a compact island unit or breakfast bar, and the cupboards behind it are  
unobtrusive and neatly designed to blend in with the rest of the living room. There are four spacious bedrooms, all  
en-suite and all with excellent views.

---

■■■■■■■■■■:

None, ■■■■■■■■, ■■■■■■■■, ■■■ ■■ ■■■■, None, ■■■■■■■■ ■■■, ■■■■■■■■■■■■ ■■■■■, ■■■■