

Benahavís

R3910750



3

4

M²: 166

525 000 €

:

:

:

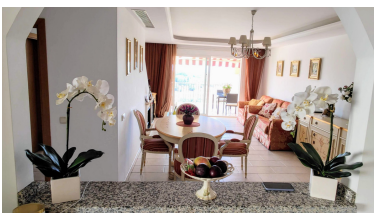
: 17th

:

:

:

2025



Spacious 3 bedroom, second floor Penthouse with many large terraces in Puerto Del Almendro, Benahavis only 5 mins drive to San Pedro town. The apartment is light and airy with a covered terrace offering panoramic views of La Concha mountain, the sea and the surrounding countryside. The property offers hot and cold air con, underfloor heating in both bathrooms and lounge, three double bedrooms with bathrooms ensuite, large living and dining area with connecting kitchen with a large terrace and a good size utility room for washing and drying. Communal areas include a swimming pool, well tended garden, and secure underground parking and storage rooms. There are several nearby golf courses to choose from, and the commercial centre of Monte Halcones is within walking distance with a selection of bar/ restaurants, shops and supermarket.

:

