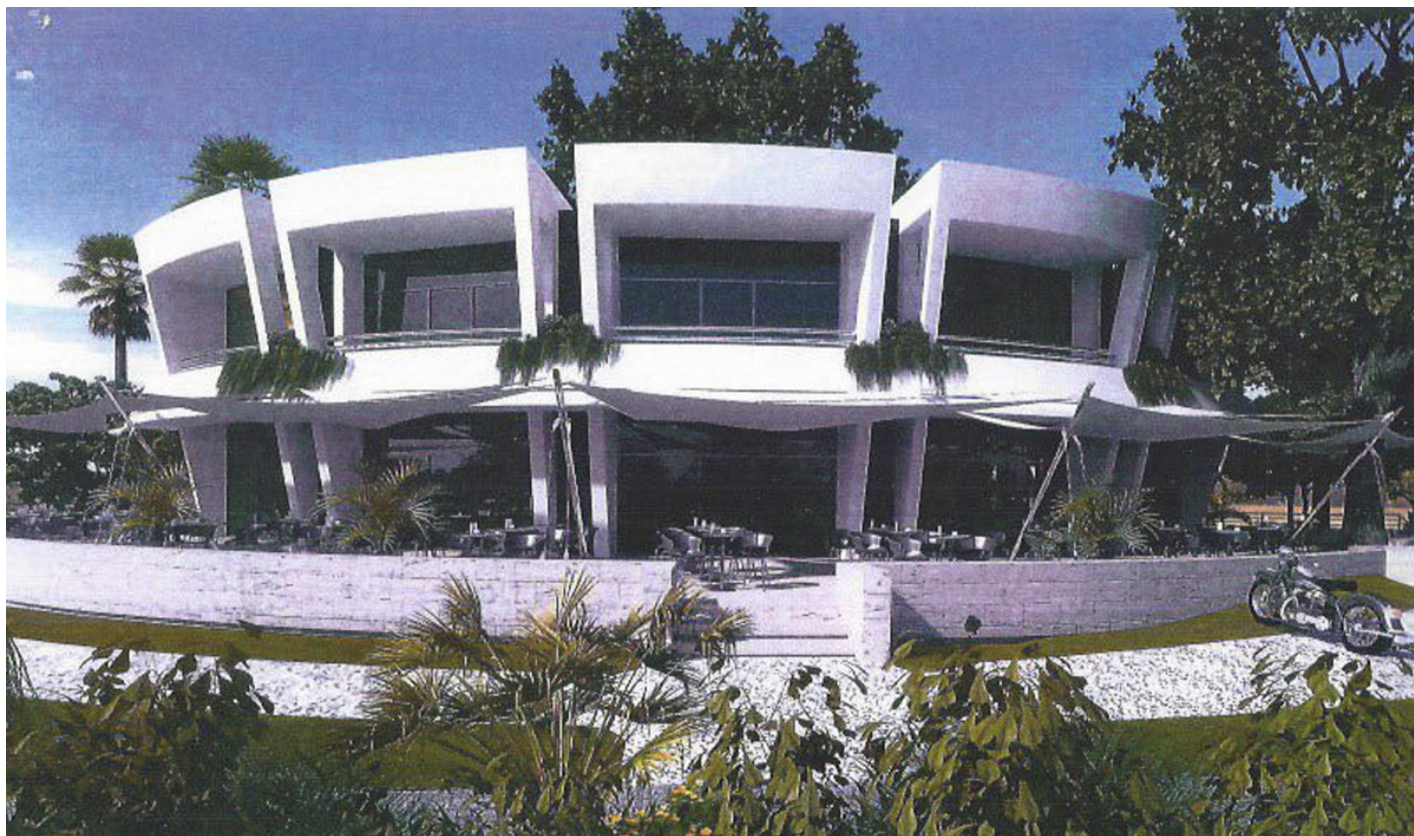


■■■■■■■ ■ Elviria

■■■■■■■■■■: R3947299



██████████: ████████████████████

██████████: ██ ██████████

M²: 2 004

■■■■: 780 000 €

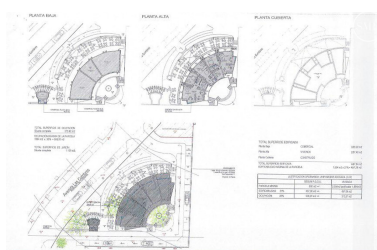
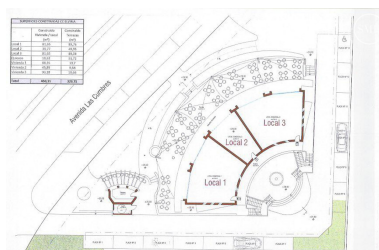
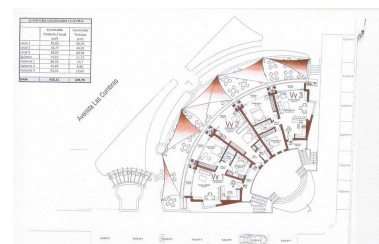
□□□□□□ : □□□□□□□□

[illegible]

DATE: **TIME:**

■■■■ ■■■■■ : 13th

■■■■ 2025



■■■■■■■■■■:Plot of 2004 meters, with project and building license included in the price. Unbeatable location in Elviria, 300 meters from the highway exit at Avd de las Cumbres, 900 meters from the beach, all urban services are very close including schools, pharmacy, restaurants, it is not necessary to use a vehicle to access them . The project consists of 3 commercial premises, 2 of them of 90 meters and 1 of 50 meters. 3 homes located on the 1st floor 2 of 90 meters and 1 of 50 meters. 1 Kiosk-Restaurant. Elviria is a popular residential community located in the eastern part of Marbella, about a 15-minute drive from Marbella city center and a 25-minute drive from Malaga International Airport. Some of the best international schools are located in Elviria, such as English International College, Deutsche Schule, and Colegio Ecos. The area is well equipped with services, restaurants, supermarkets and entertainment facilities. Also conveniently located are the Santa María and Santa Clara golf courses with their respective clubs and two more golf courses, Golf Club Marbella and Golf Rio Real, are just a short drive away. Elviria offers beautiful sandy beaches with charming beach restaurants and the famous Nikki Beach beach club is located right next to the luxurious five-star Hotel Don Carlos.

■■■■■■■■■■:

None, None, ■■■■■■■■■■