

Manilva

R3956242



2

2

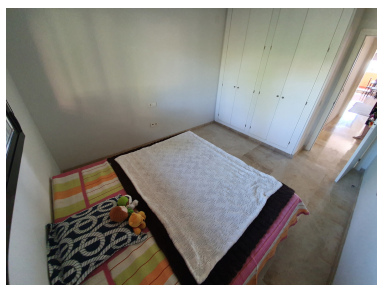
M²: 115

179 950 €

: 2nd

2024





■■■■■■■■■■:Gorgeous 2 bed, 2 bath elevated ground floor apartment with a large sunny south facing terrace with views to the mediterranean, gorgeous sea views, includes underground parking space and seperate storage. Very nice and well established community, tropical and green looking. Nice and quiet surroundings. The urbanisation has a communal pool and paddle court, close to gibraltar, easy commute.

■■■■■■■■■■: