

■ ■ ■ ■ ■ ■ ■ ■ ■ ■ ■ Benahavís

■■■■■■■■■■: R3965923



■■■■■: 2

■■■■■: 2

M²: 99

■■■■: 440 000 €

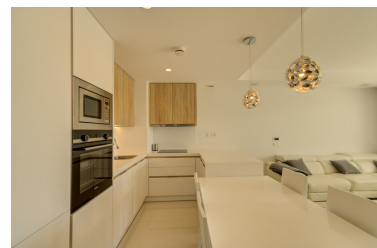
██████████: ██████████

**□ □ □ □ □ □ □ □ □ □ □ □ □ □ :
□ □ □ □ □ □ □ □ □ □ □ :**

██████████: ████████████████████

■■■■ ■■■■■ : 27th

■■■■■ 2025



■■■■■■■■■■:Stunning brand new ready to move in to fully furnished two-bedroom apartment located close to the Atalaya Golf course in Benahavis. This bright and spacious apartment briefly comprises of; a fully fitted open kitchen with a spacious living/dining area that leads out to a beautiful sunny terrace with panoramic views over the swimming pool and golf course. The large master bedroom is en-suite while the second bedroom is a good size with a family bathroom, plus the property comes with a private car parking space and storage room. The community has beautifully landscaped gardens, four swimming pools, a padel tennis court and a leisure area complete with a barbecue for use of the community. Located between Marbella and Estepona, only 1km from the beach and walking distance to the golf course of Atalaya Alta, just a couple of minutes drive to Benahavis, plus a touch further to all basic general amenities.

□□□□□□□□□□:

[illegible]